

# ECON 0100 | Part F

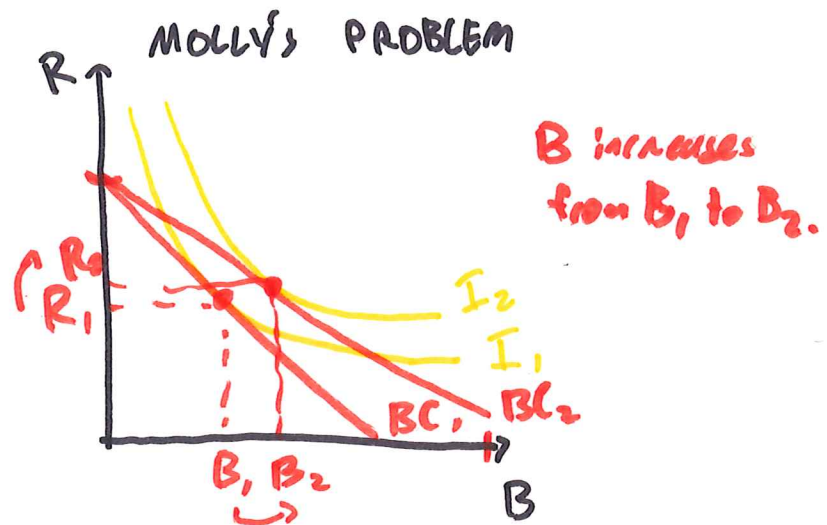
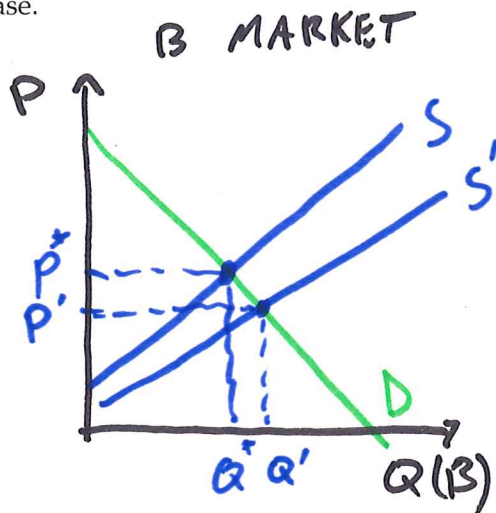
## Vignette F2

### Molly's Budget

Molly Weasley recently started an hourly wage job as a Herbologist at a large Herbology firm and divides her income between butter beer and roast beef sandwiches (both of which are normal goods). For each budget constraint below, show butter beer on the horizontal axis and roast beef sandwiches on the vertical axis.

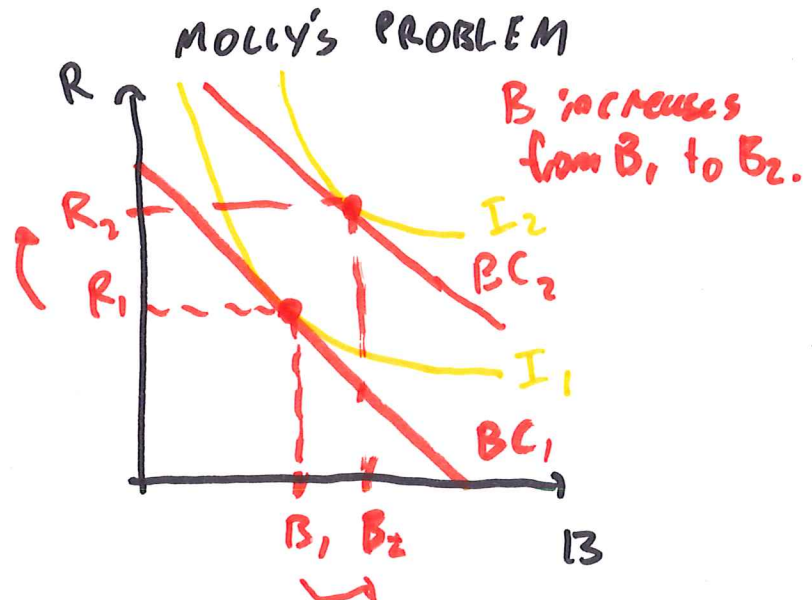
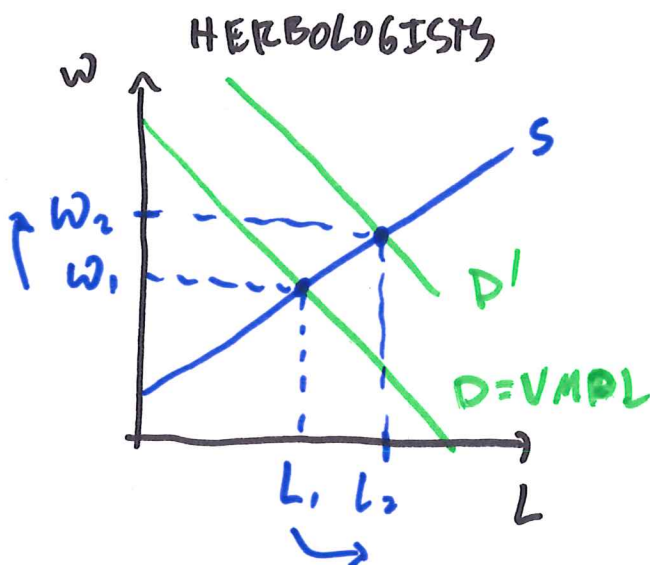
### Question 1 | New Butter Beer Shops

Use two graphs to show what would happen to Molly's choice of butter beer if the number of shops selling it were to increase.



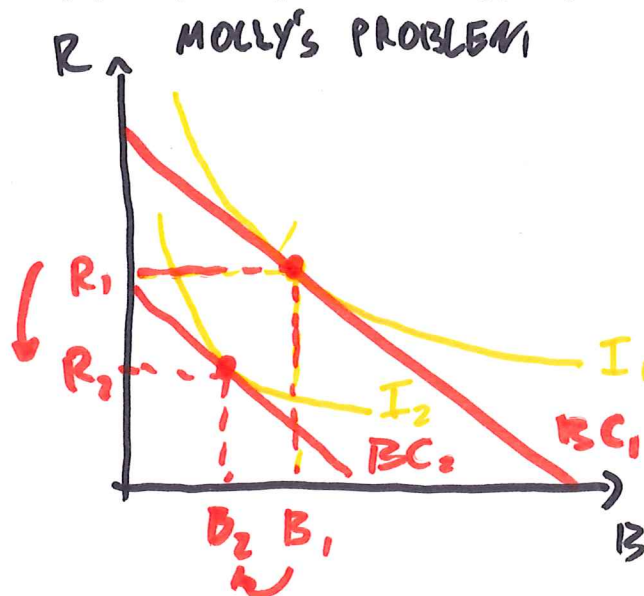
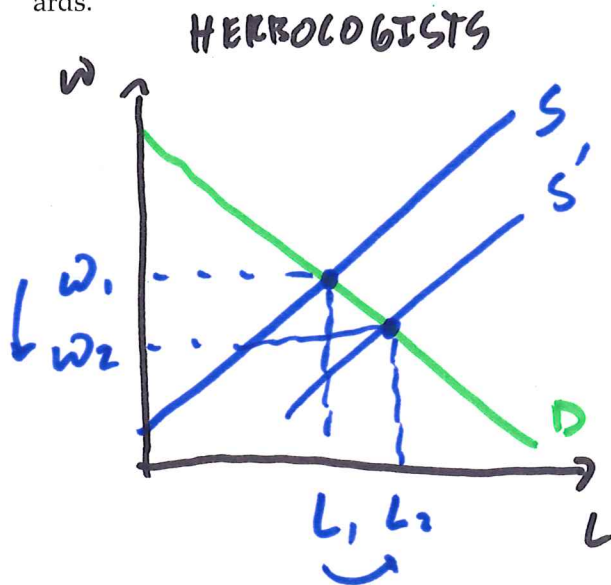
### Question 2 | Curing Magical Maladies

Use two graphs, one of the labor market and one of the consumer's problem, to show what would happen to Molly's choice of butter beer after the discovery that a standard Herbology technique could cure previously untreatable magical maladies, raising the demand for Herbologists.



### Question 3 | A Popular Film

Use two graphs, one of the labor market and one of the consumer's problem, to show what would happen to Molly's choice of butter beer following the release of a blockbuster wizarding film that glamorized the adventurous and mystical aspects of Herbology, with a dramatic rise in the popularity of the profession among young witches and wizards.



$B$  decreases from  $B_1$  to  $B_2$ .